



# Installation Guide

\* For automatic transmission vehicles only

**RS-JL2LR1**

REV 01172022

## ***For 2018-2022 Jeep Wrangler and Gladiator (Push-To-Start Ignition)***

---



You may view a high-resolution color version of this guide online at <http://install.kleinn.com/RSJL2LR1> or by scanning this QR code.

-This is a pre-wired plug and play kit. No wire connections are required into the vehicle for basic installation. The kit also includes an optional parking light flash feature. If used, that feature requires one wire connection.

-We have already loaded the correct firmware into the remote start module. You will need to pair the module to your vehicle when the wiring is complete. Instructions are on page 5.

### **Overview**

There are 6 basic steps to this remote start installation. We're going to address each of these:

1. Download and install Flash Link Manager software.
2. Make the connections.
3. Pair the remote start to the vehicle.
4. Pair the long-range remotes to the remote start
5. Test the system.
6. Button it up!

### **Step 1: Download and install Flash Link Manager software**

\*\*The Flash Link Manager (FLM) software only works on a Windows computer.

Enter the following link into your web browser, then download and install the software:

**<https://fortin.ca/en/support/flashlinkmanager.html>**

Next, open the software and log in with the following credentials:

**email: [flash@kleinn.com](mailto:flash@kleinn.com)**

**password: Flash2020**

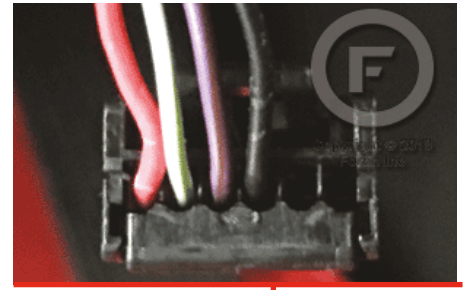
Once the (FLM) software installed and open, then connect the Flash Link Updater (FLU) to the USB port of your Windows computer. The (FLM) software will detect (FLU) and display a message that the module is not connected, this is normal. Next, select "Pro Mode" when prompted, if not prompted, click the gear in the upper right hand corner and select Pro Mode. Do not plug the remote starter into the (FLU) tool until you have completed the wiring and vehicle programming procedure at step 3. Leave the computer and software in this state ready to plug the module in when the time comes, and proceed with the wiring connections.

## Step 2: Wiring

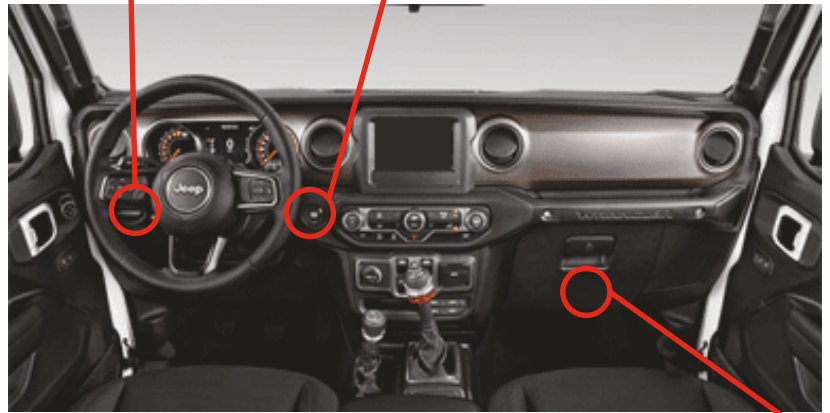
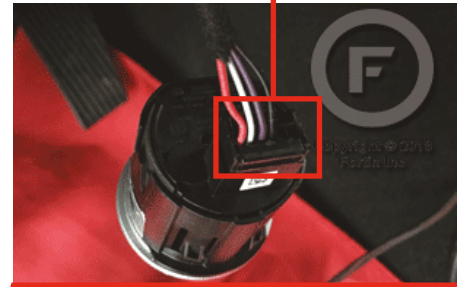
### Where to make connections:

When you open up your remote start, you're going to see a bunch of loose wires in a bundle. Don't be intimidated! The system wiring overview and steps below will show you the specific wires that you're going to need and where they connect in your vehicle. Any wires that are not shown to connect in this guide will not need to be connected.

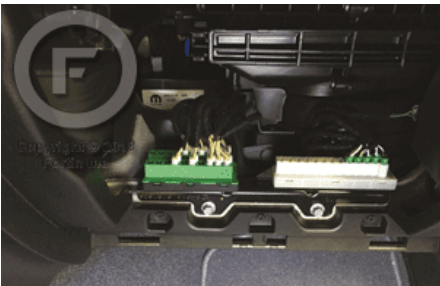
① At Push-to-Start button.



③ At parking light switch.



② At CAN junction, behind the glovebox.

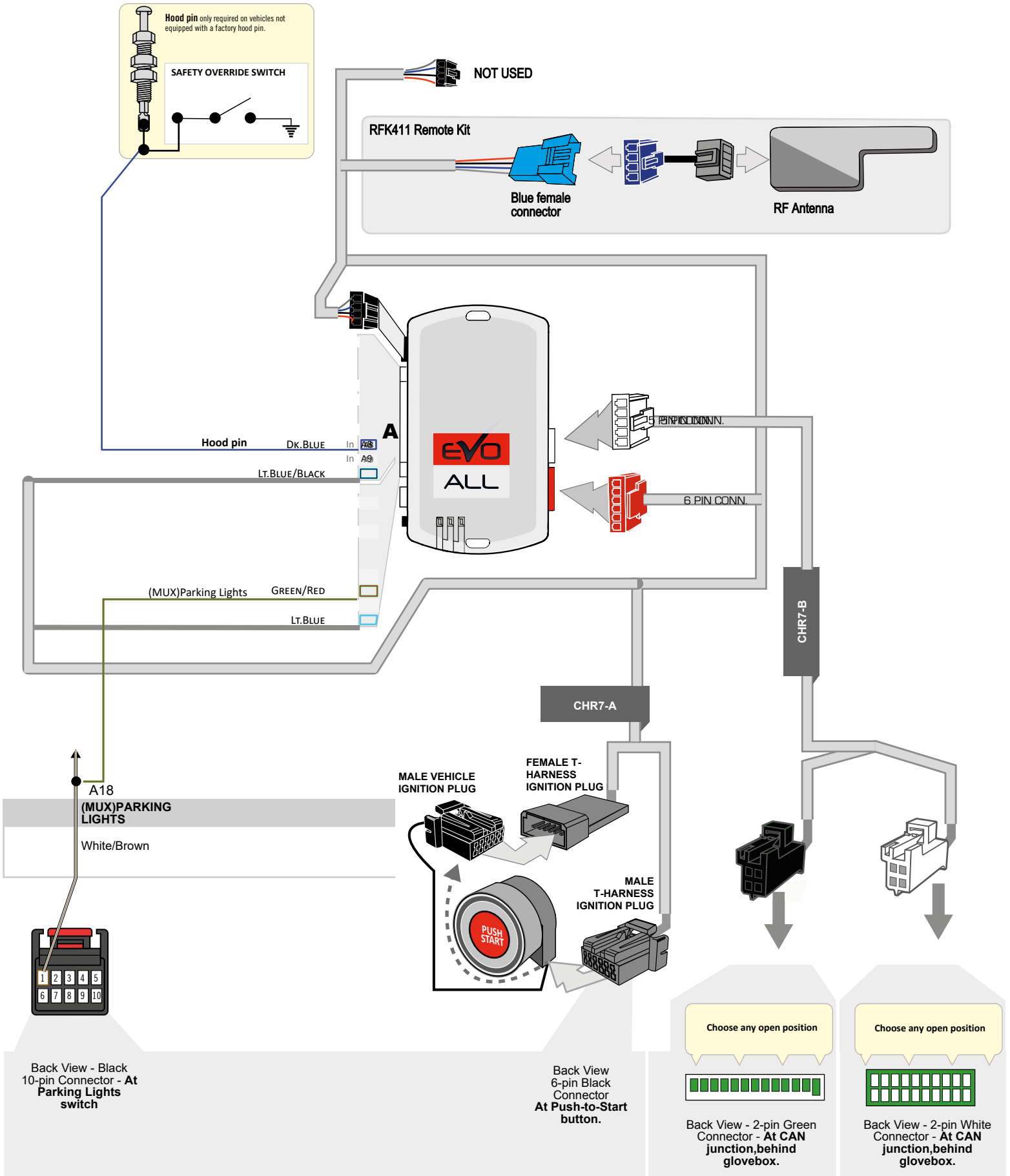


### Preparation:

Remove the plastic shroud below the steering wheel in the vehicle. This will allow access to the under dash driver's side location of the vehicle. The remote start brain will be mounted in this location. Before you start wiring, look for a place under the dash where there's some open space that will fit the module. Pay attention to moving parts like the pedals, e-brake and steering column. Be sure to route your wiring away from those areas. Be careful not to break the panels –especially in cold weather.

Next, open the glove box on the passenger's side and release the tabs on both sides to open the glove box past it's normal stopping point. The glove box can then be lifted off its hinges and removed. This will allow access to the CAN Junction connectors.

# System Overview



1. Connect the CHR7-A harness. The male OEM plug on the back of the vehicle Push-To-Start button will be accessible to the right of the steering column. Reach in with your hand or dismount the push-to-start button to locate and disconnect the plug from the back of it. Then, connect the male t-harness plug into the back of the vehicle push-to-start button, and plug the female t-harness plug into the male OEM plug.
2. Connect the CHR7-B harness. Route the end of the harness with the two 2-Pin CAN Junction plugs behind the center console and to the area below the glove box.
3. Plug the White connector of the t-harness to any open slot in the Green CAN junction box, the plugs will be White in this box.
4. Plug the Black or Green connector into any open slot in the White CAN junction box, the plugs will all be green in this box

## **Optional wiring connections**

**Parking lights** - This will serve as a visual indicator that the vehicle is running. If you wish to have this option, locate the Green/Red wire in the bundle of unused, loose wires. Connect the Green/Red wire to the vehicle White/Brown parking light wire at the back of the parking light switch, Pin position 1 as shown in the system wire diagram. To assist with identification, a photo of the back of the parking light switch can be found on Page 2.

This is a 'tap-on' connection. Do not cut the White/Brown parking light wire in the vehicle. Simply attach the Green/Red wire from the remote start T-harness on to the white/brown parking light wire.

**Hood Pin** - This is an important safety feature. It de-activates the remote start while the hood is open to prevent injury from accidental remote starting while working under the hood. Most vehicles will have an OEM hood pin that is read by the remote start module. In these vehicles, installation of the aftermarket hood pin is unnecessary.

If you are uncertain as to whether or not your vehicle had factory hood pin - after you complete the remote start installation and test the system, try remote starting the vehicle with the hood open. If the vehicle will not start, you have a factory hood pin. If the vehicle does start, you do not.

If you install the hood pin, it must be mounted so that:

- a. The body of the pin is mounted to metal
- b. The pin is depressed when the hood is closed and released when the hood is open.

Connect the Dark Blue wire from the loose wire bundle to the hood pin (you may need to extend the wire). The ground signal from the hood pin on that Dark Blue wire will disable the remote start system.

**Valet Switch** - The valet switch can also be used to disable the system.

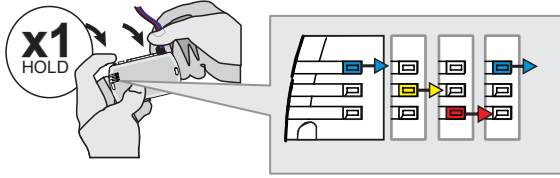
- a. Connect one side of the switch to the Dark Blue wire from the loose wire bundle
- b. Connect the other side of the switch to ground

Both the hood pin and the valet switch can be connected to the Dark Blue wire.

## STEP 3: Programming

Once the T-harness has been connected, the remote start module is ready to be programmed.

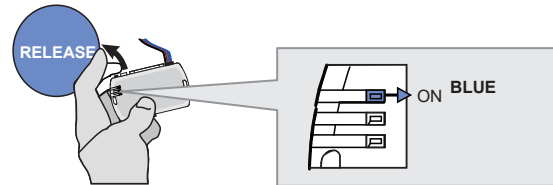
1



**Press and hold** the programming button:  
**Insert** the 4-Pin (Data-Link) connector.

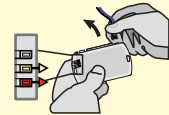
↳ The Blue, Red, Yellow and Blue & Red LEDs will alternatively illuminate.

2

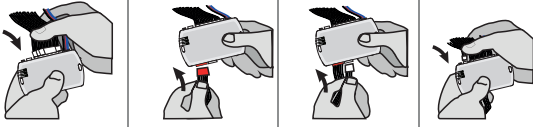


**Release** the programming button when the LED is BLUE.

*If the LED is not solid BLUE disconnect the 4-Pin connector (Data-Link) and go back to step 1.*

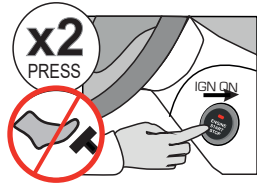


3



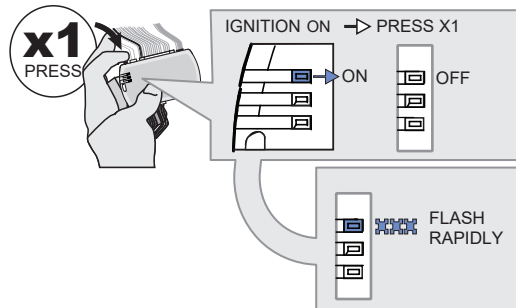
**Insert** the required remaining connectors.

4



Do not press the brake pedal.  
Press the START/STOP button twice to turn ON the ignition.

5

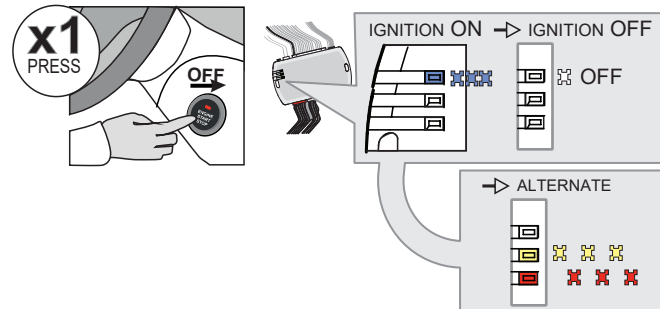


**Press and release** the programming button once (1x).

↳ The BLUE LED will turn off.

↳ The BLUE LED will flash rapidly.

6



**Press** the START/STOP button once to turn OFF the ignition.

↳ The BLUE LED will turn off.

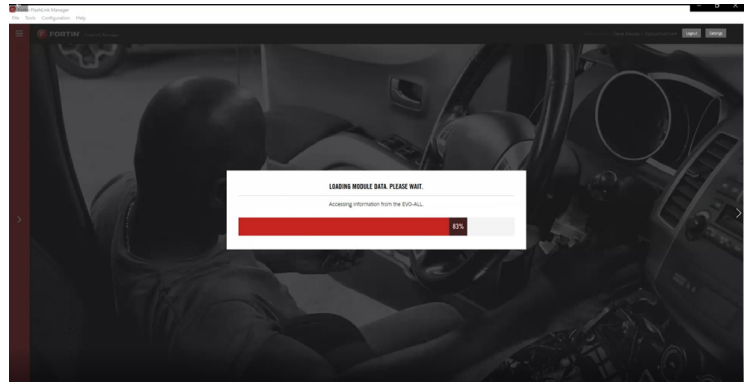
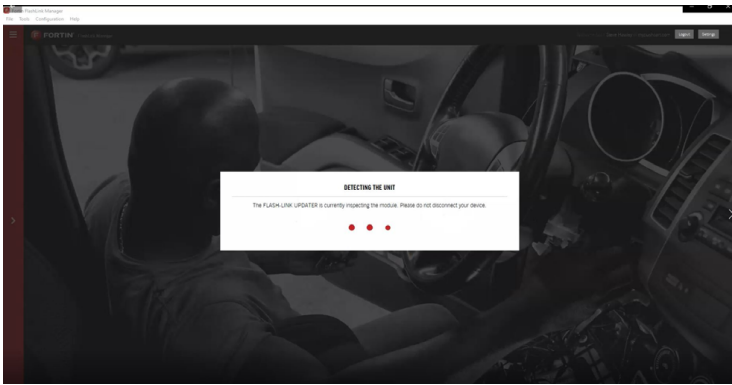
↳ The RED and YELLOW LEDs will alternate.

Once you have the alternating red and yellow LED's, unplug all the connectors from the remote start brain. Be sure to disconnect the 4-pin black data link plug last.

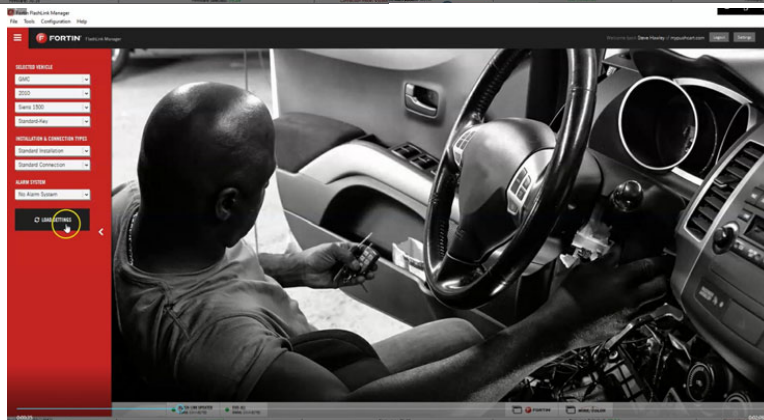
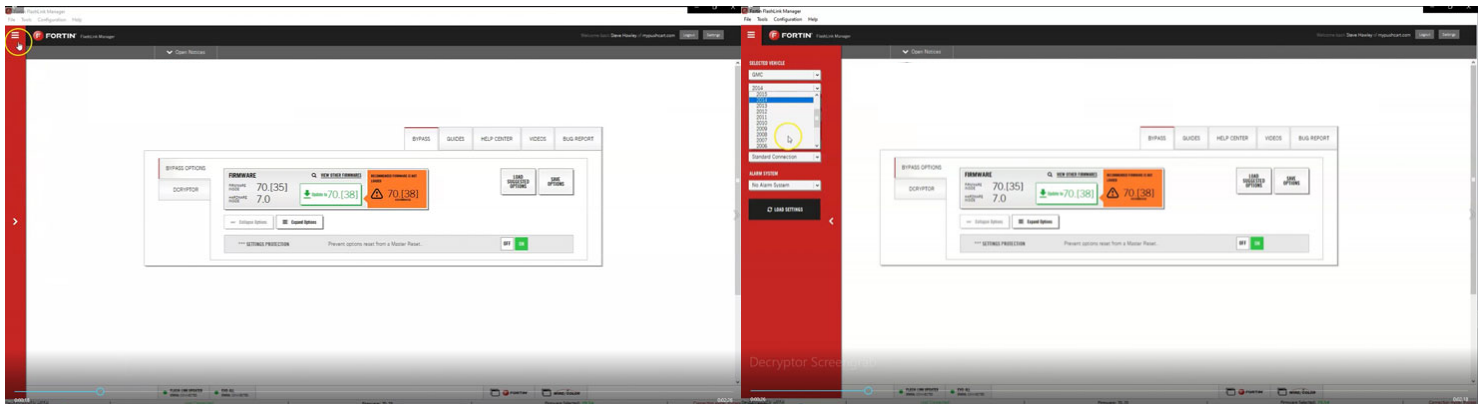
Next, it's time to bring the remote starter module to your computer and plug it into the supplied four-pin plug from the Flashlink Updater (FLU). For a video on how to do these steps visit: [www.kleinn.com/flashlink](http://www.kleinn.com/flashlink)



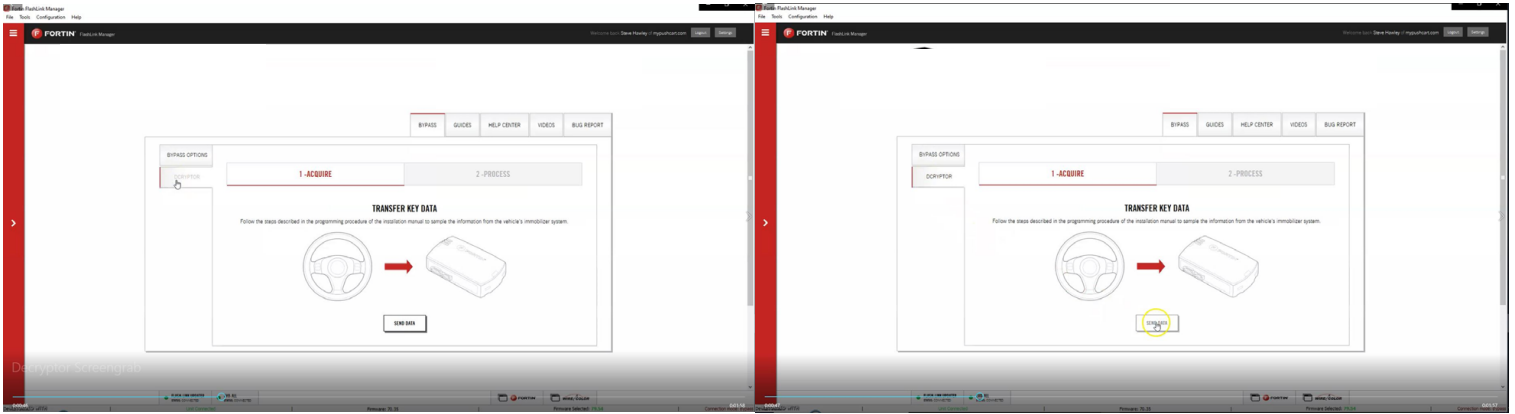
The software will detect you plugging it in and will automatically load the current settings.



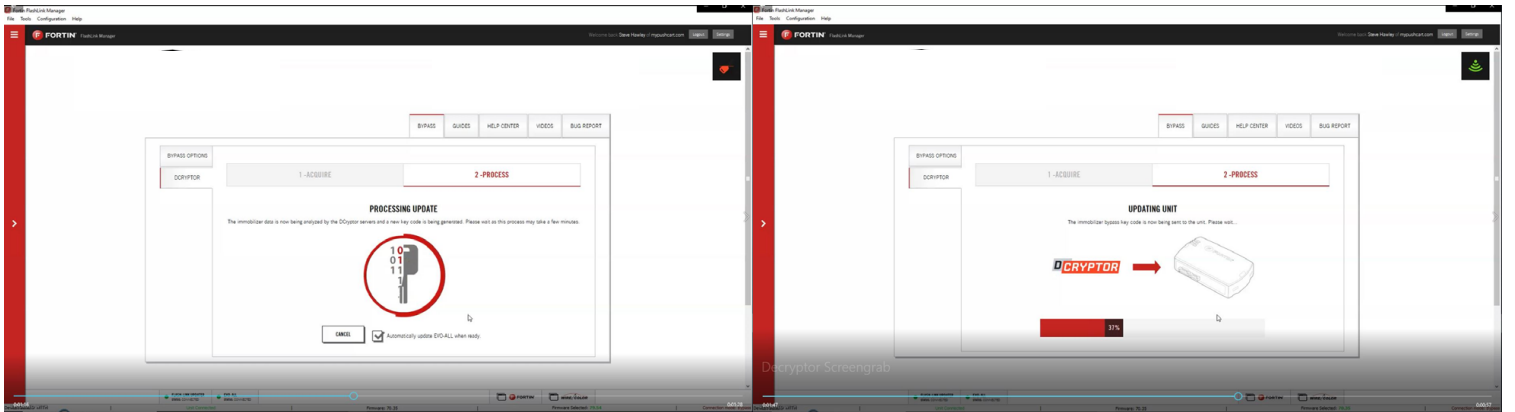
The first step is to select your vehicle. **NOTE: Make sure to select your year, make, model and key type ONLY, Do not change any of the boxes underneath these**, just scroll past them and click load settings. We have already loaded the correct settings for you. Click the three bars at the top of the Red bar on the upper left corner of the screen. Select your make, year, model, key type and then click load settings. Again, do not change any other dropdowns or any options - we have already done these settings for you.



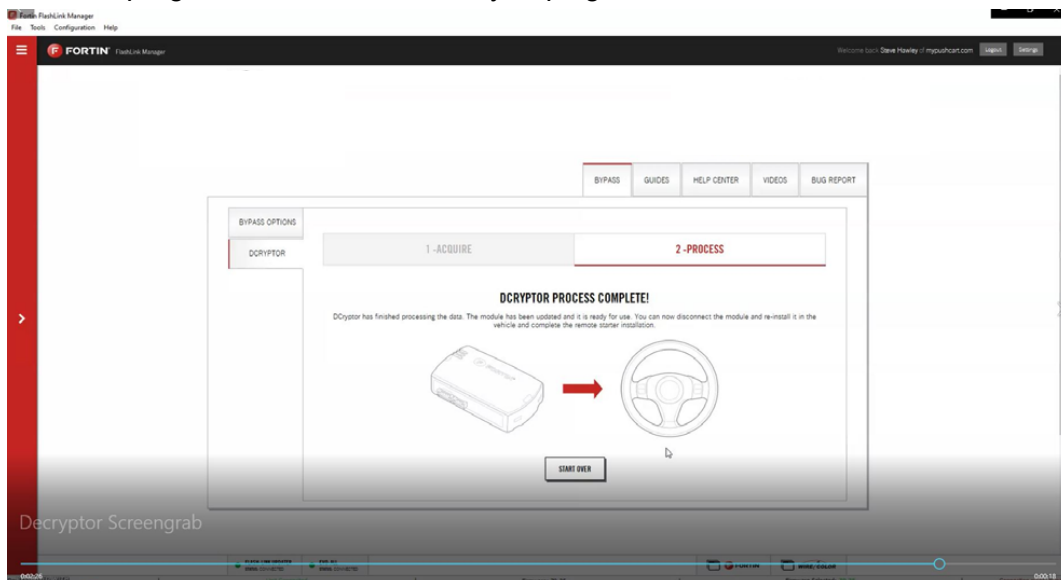
Next, click the Dcryptor tab. Then click on the Send data button.



Wait while the updater reads data from the remote starter. Once it is done it will update the remote starter and you will need to wait again. You will see a status bar at the bottom of the screen. When it gets to 100%, the Dcryptor process is complete.

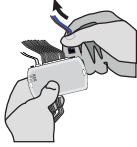


You can now unplug the remote starter module and plug it back into the connectors in your vehicle. Make sure to plug in the power connector first and then the rest of the plugs afterward. Do not hold the program button down when you plug the connectors back in.



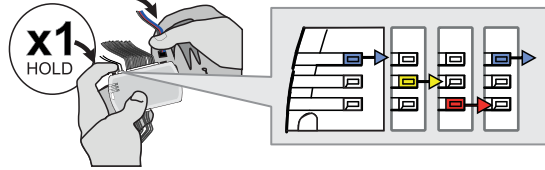
## Step 4: Pair the remotes to the remote starter

1



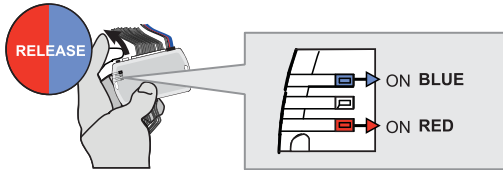
**Unplug** the 4 Pin (Data-Link) connector from the EVO module.

2



**Press and hold** the programming button:  
Reinsert the 4-Pin (Data-Link) connector.

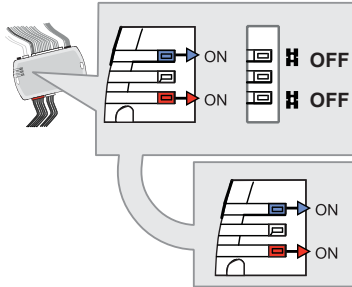
3



**Release** the programming button when LEDs are BLUE & RED.

*If the LED are not solid BLUE and RED disconnect the 4-Pin connector (Data-Link) and go back to step 1.*

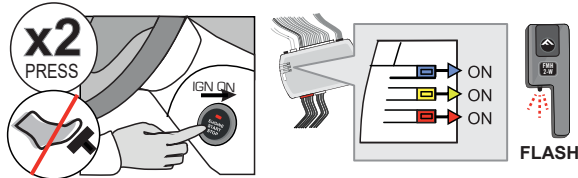
4



**Press and hold** the programming button until the Blue and RED LED turn back ON.

*The Blue and Red LED will go Off and back On.*

5




**Do not press the brake pedal.**  
**Press the START/STOP button twice to turn ON the ignition.**

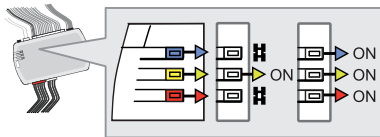
The Blue, Yellow and Red LEDs will turn On. The antenna will flash rapidly.

6

RM411



On each Transmitter  
Press and **HOLD** the  for **12 SECONDS** and **WAIT** for the LED to **TURN ON SOLID** then **release**.



The Blue and Red LEDs will flash once everytime to confirm.

7



**Press** the **START/STOP** button once to turn OFF the ignition.


**The remote is now programmed.**



## Step 5: Test the System

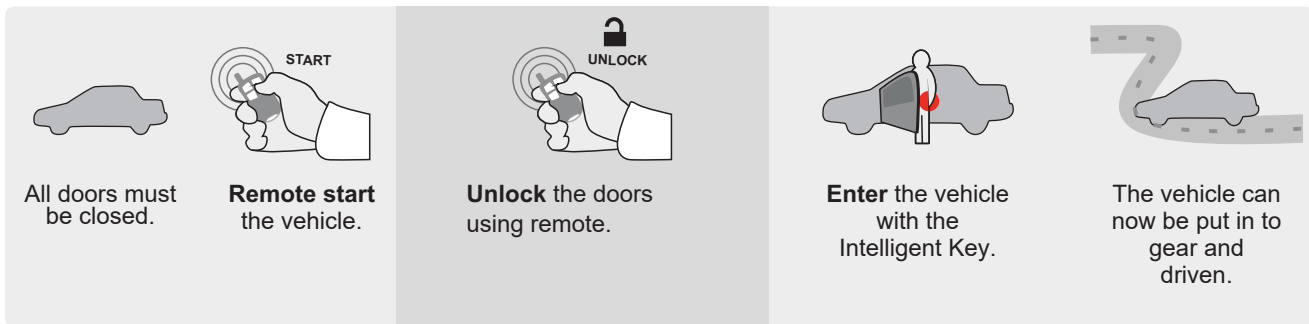
Once all wiring and programming are done, you should test the system to make sure everything is working properly before you close up the installation.

### USING THE REMOTE CONTROL

| RM411   | press     | seconds     | COMMAND              | DESCRIPTION   |
|---|-----------|-------------|----------------------|---|
|  | <b>1x</b> | 0.5 seconds | <b>LOCK</b>          | Press the button 1x (0.5 seconds) : Locks all doors, arm the anti-theft system and activates the Alarm (if installed).        |
|   | <b>2x</b> | 0.5 seconds | <b>UNLOCK</b>        | Press the button 2x (0.5 seconds): Unlocks all doors, disarms the anti-theft system and deactivates the Alarm (if installed). |
|   | <b>1x</b> | 3 seconds   | <b>START OR STOP</b> | Press and hold the button for 3 seconds: Remote-start the vehicle. If the engine is ON : the engine will turn OFF.            |

## Step 6: Close it Up

Now gather up all of your wiring and neatly bundle it together using zip ties or electrical tape. Find a secure place to put the remote start module and use zip ties to secure it. **Make sure that the remote start wires are not near any moving parts on the steering wheel, pedals or emergency brake! Re-Install any panels that were removed to gain access to key switch in reverse order they were removed. ENJOY!**



If the vehicle is not unlocked before the door opens, the remote starter will shut down when a door is opened or the brake is pressed.

If your vehicle is not equipped with power locks, it is still necessary to send the unlock command from the remote control to avoid shutdown upon entry

**If you have any installation questions or problems, call for tech support**

**520.579.1531**

Copyright 2021 Kleinn Automotive Accessories